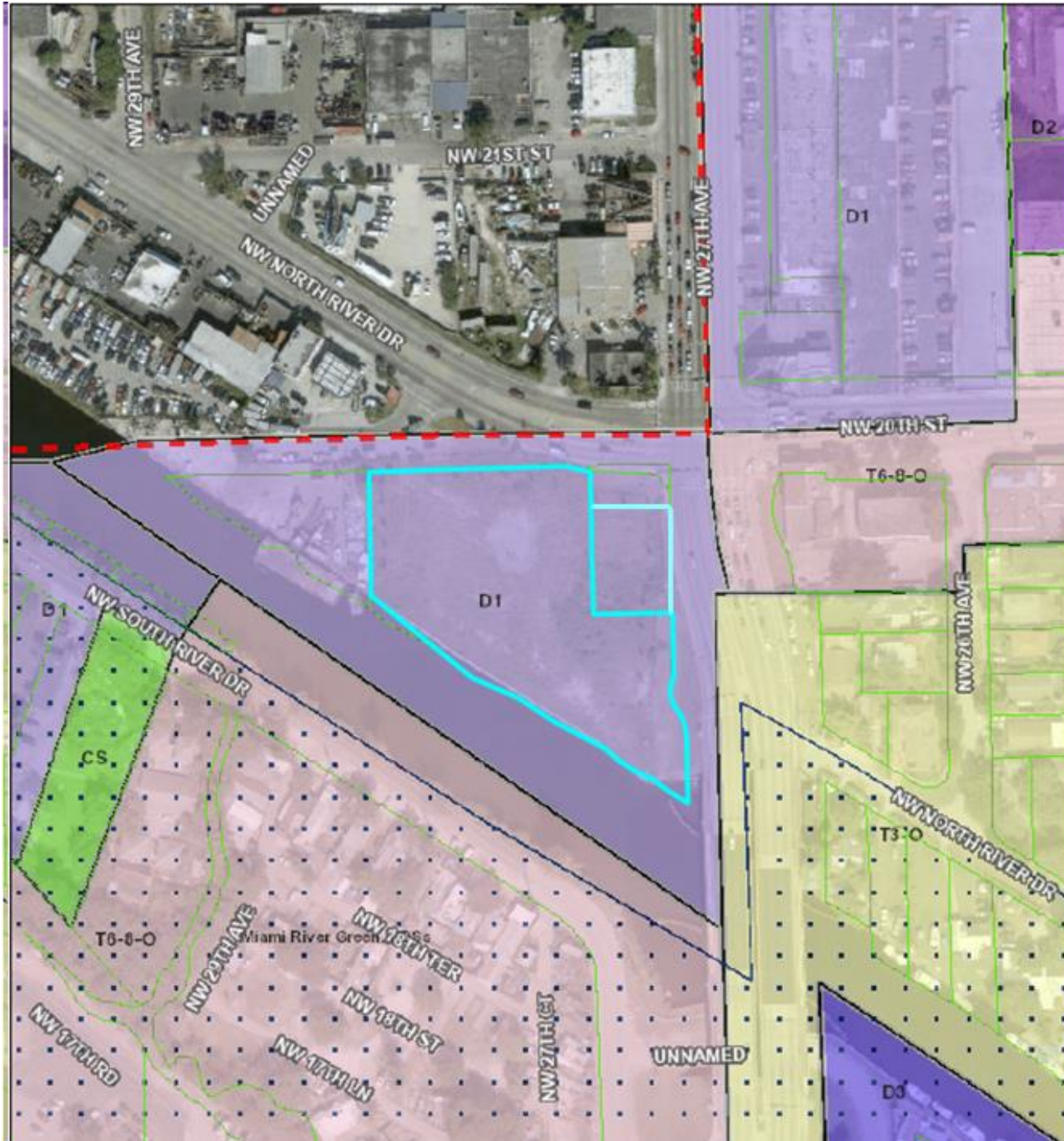
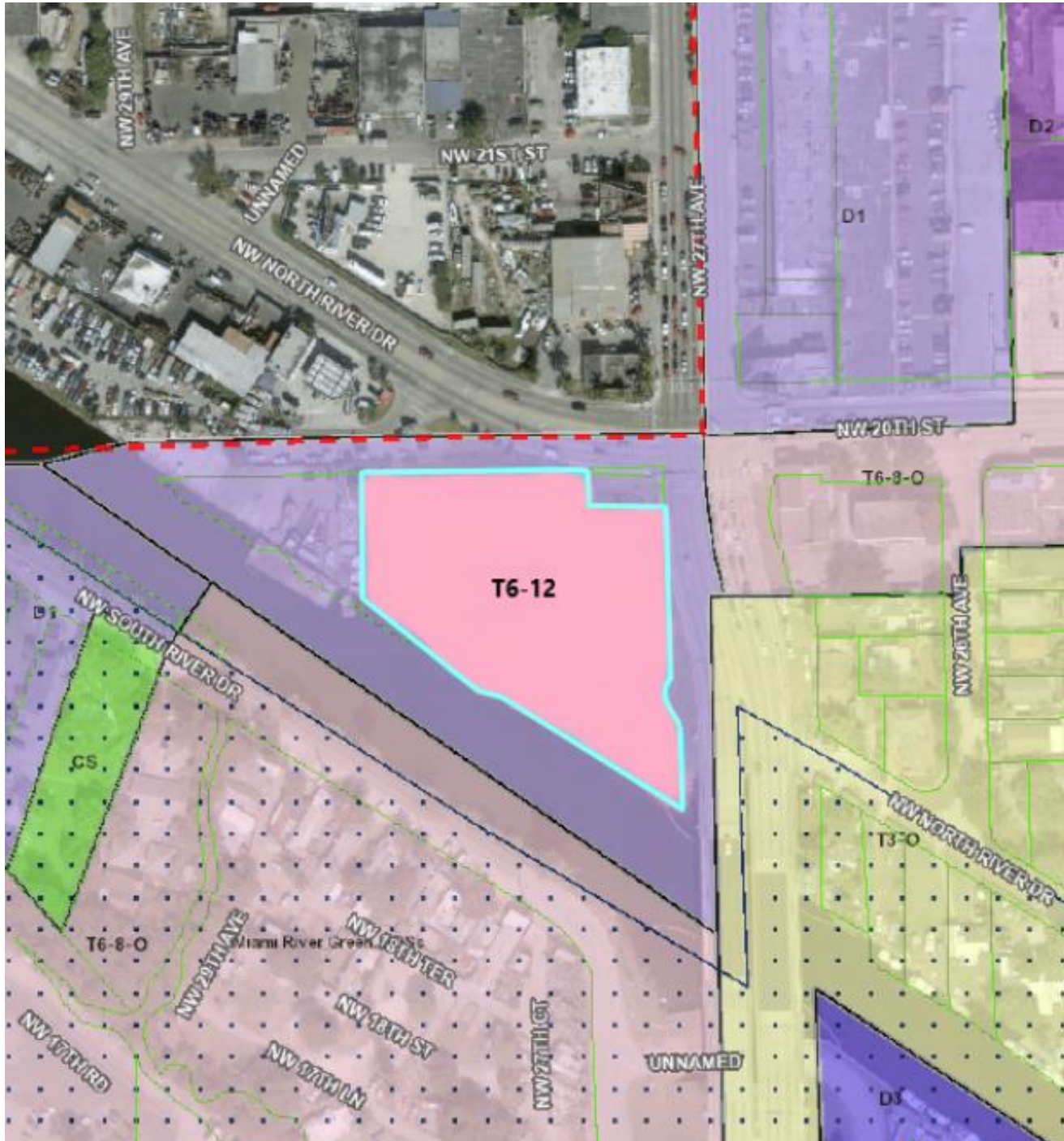


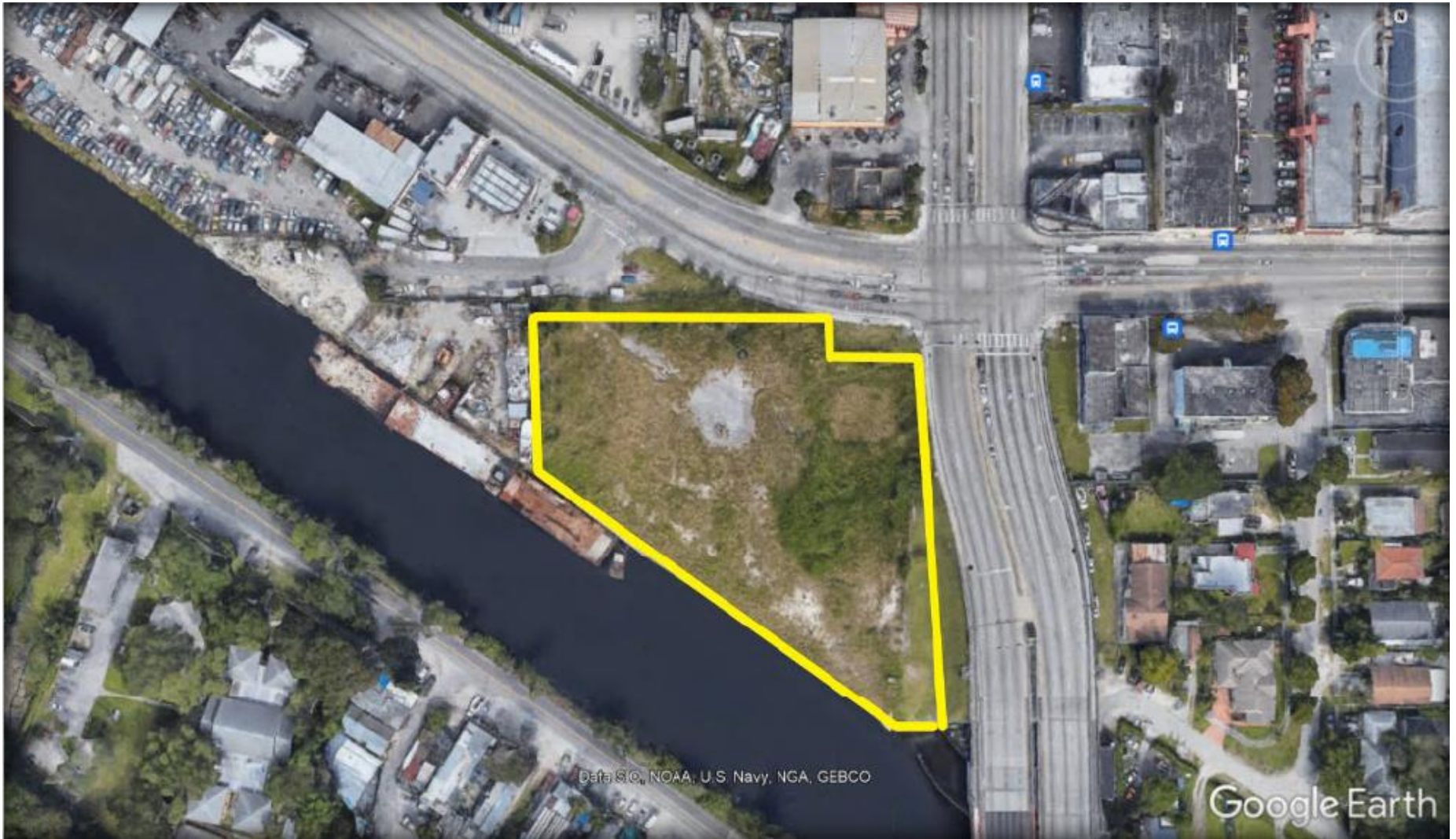
EXISTING ZONING MAP



PROPOSED ZONING MAP



PROPERTY AERIAL



PORT OF MIAMI RIVER SUB-ELEMENT

Goal PA-3: The Port of Miami River shall be encouraged to continue operation as a valued and economically viable component of the City's maritime industrial base.

Objective PA-3.1: (PLANNING AND ZONING). The City shall protect the Port of Miami River from encroachment by non-water-dependent or non-water-related land uses, and shall regulate the Port of Miami River's expansion and redevelopment in coordination with applicable future land use and coastal management goals, objectives, policies (See Policy LU-1.3.3 and Goal CM-3).

Policy PA-3.1.8: There shall be no net loss of recreational wet-slips along the Miami River.

Policy PA-3.1.9: The City shall require from new residential development and redevelopment located along the Miami River a recorded covenant acknowledging and accepting the presence of the existing Working Waterfront 24-hour operations as permitted.